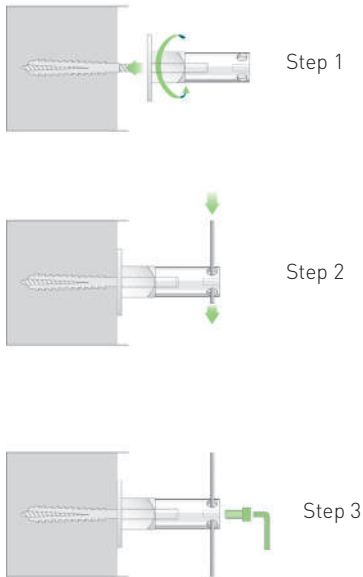


GREENCABLE® ASSEMBLY INSTRUCTION

GREENCABLE®: Easy to install

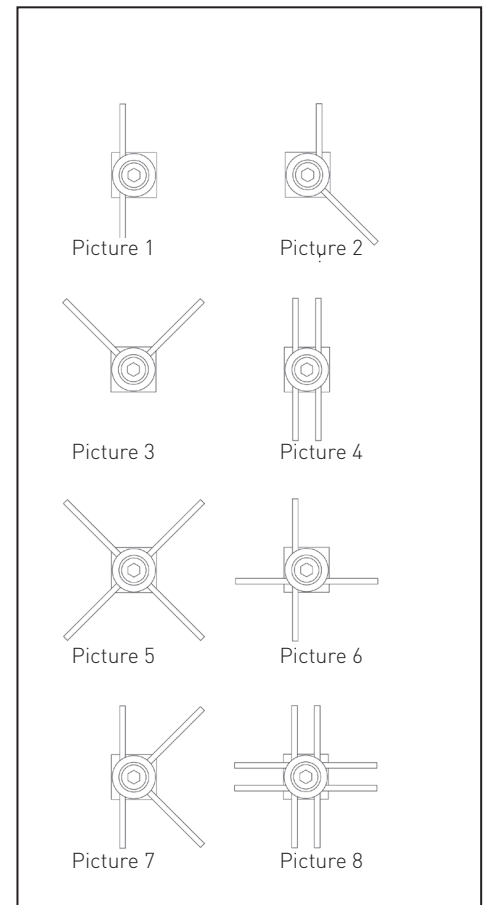


Technical specifications

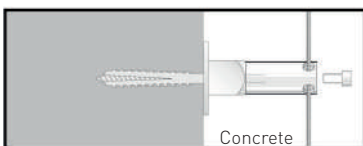
Distance between wall mount units	2 m
High wall mount	95 mm
Dimension wall mount base	30 x 30 mm
Aluminium disc thickness	5 mm
Diameter aluminium discs	Ø 60 mm
Distance between rope and wall	
Without aluminium disc	80 mm
With aluminium disc	85 mm
Torque head screw	20 Nm
Slip force rope	50 kg



Different rope and wall mount unit configuration possibilities

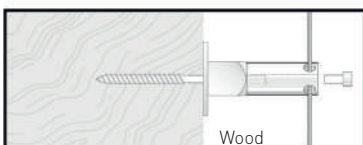


Assembly depending on wall specifications



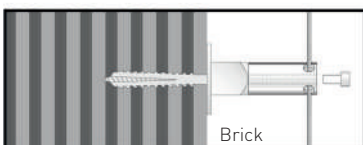
Concrete

Fixing with wall anchor
Stability without aluminium disc max 110 Kg
Stability with aluminium disc max. 130 Kg



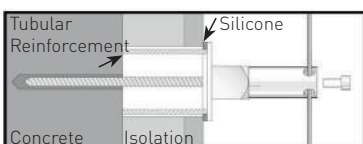
Wood

Fixing with dual thread screw



Brick wall

Fixing with special grub screw M10



Facing with insulation

Fixing with grub screw M10 in combination with plastic tube 40mm and sealing compound

