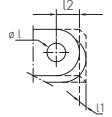
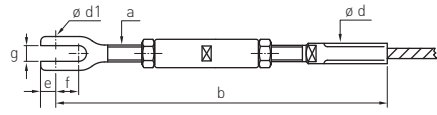


**SPANNSCHLOSS MIT GABELFITTING\_TURNBUCKLE WITH FORK FITTING**


Artikelnummer Part number	a	b	e	f	g	ø d	ø d1	ø Seil ø rope	Spannweg Adjustment	kN	l1	l2	ø l
670-0600 <a href="#">dwg</a>	M10	231	14	18	10	12,5	10	6	+13   -43	26	8	17	10,3
670-0800 <a href="#">dwg</a>	M12	307	16	24	12	16,1	12	8	+22   -58	47	10	20	12,3
670-1000 <a href="#">dwg</a>	M14	346	20	29	14	17,8	16	10	+31   -73	74	12	26	16,3
670-1200 <a href="#">dwg</a>	M16	458	25	35	17	21,4	20	12	+39   -87	97	15	33	20,3
670-1400 <a href="#">dwg</a>	M20	535	28	41	20	24,9	23	14	+46   -106	132	18	38	23,3
670-1600 <a href="#">dwg</a>	M24	644	33	48	22	28	26	16	+60   -126	161	20	42	26,3
670-1800 <a href="#">dwg</a>	M27	712	38	53	28	34,5	29	18	+54   -135	204	25	48	29,3
670-2200 <a href="#">dwg</a>	M30	850	40	61	30	40,3	33	22	+74   -164	280	25	56	33,3
670-2600 <a href="#">dwg</a>	M36	913	45	71	33	45,9	36	26	+56   -164	391	30	60	36,3

Werkstoff 1.4401 | Europäische Technische Zulassung | kN = [cal\_Z<sub>B,k</sub>] Bruchkraft

Material AISI 316 | European Technical Approval granted | kN = [cal\_Z<sub>B,k</sub>] breaking load